

Solo B \flat Clarinet

Sonatina for Clarinet and Piano

-I-

Richard E Brown (ASCAP)

Allegro agitato $\text{♩} = 134$

mp

mf

FOR (11)

mp

PREVIEW

mf

(18)

ONLY

f

(25)

mp

(32)

mf

Solo B \flat Clarinet

38 *mf*

46 *mp*

mf

53 *ff*

60 *ff*

67

74

mf

76 *mp*

FOR
PREVIEW
ONLY

Solo B \flat Clarinet

Musical staff with notes and dynamics. Dynamics: *mf*, *mf*.

82

Musical staff with notes and dynamics. Dynamics: *mf*.

88

Musical staff with notes and dynamics. Dynamics: *mf*.

Musical staff with notes and dynamics. Dynamics: *mf*.

Musical staff with notes and dynamics. Dynamics: *mp*.

2

Musical staff with notes and dynamics. Dynamics: *mp*, *mp*.

105

Musical staff with notes and dynamics. Dynamics: *f*.

Musical staff with notes and dynamics. Dynamics: *rit.*

meno mosso *rit. molto*

Musical staff with notes and dynamics. Dynamics: *p*, *pp*, *n*.

Solo B \flat Clarinet

-II-

Andante tranquillo $\text{♩} = 80$ (9)

8

p

(17) 8 (25)

mf

FOR

(33) **PREVIEW**

p

(41) **ONLY** (49)

mf

mp *p*

(57) *mp*

rit. (65) *rit. molto*

p *pp* *ppp*

Solo B \flat Clarinet

-III-

Allegro $\text{♩} = 88$

f

9

FOR

PREVIEW

21 22

mf

ONLY

29

f

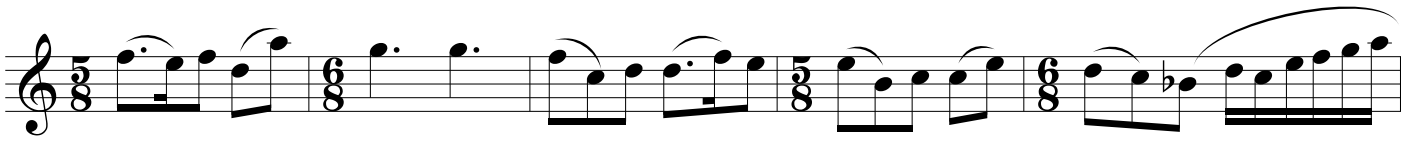
2 2

Solo B \flat Clarinet

45

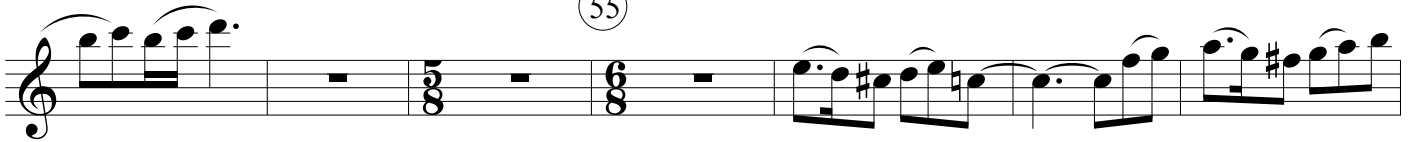


Musical staff 1, starting at measure 45. It begins with a whole rest, followed by a series of eighth notes and quarter notes, marked with a forte (*f*) dynamic.

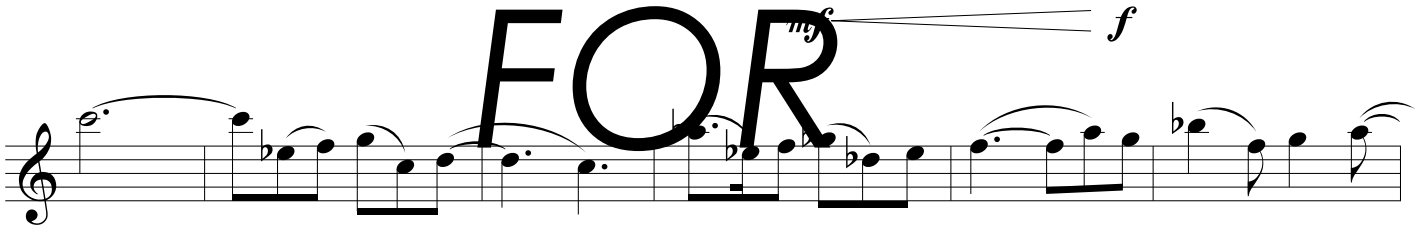


Musical staff 2, continuing the melodic line with eighth and quarter notes.

55



Musical staff 3, starting at measure 55. It features a triplet of eighth notes followed by quarter notes, with dynamics ranging from mezzo-forte (*mf*) to forte (*f*).



Musical staff 4, continuing the melodic line with various note values and dynamics.



Musical staff 5, continuing the melodic line with various note values and dynamics.

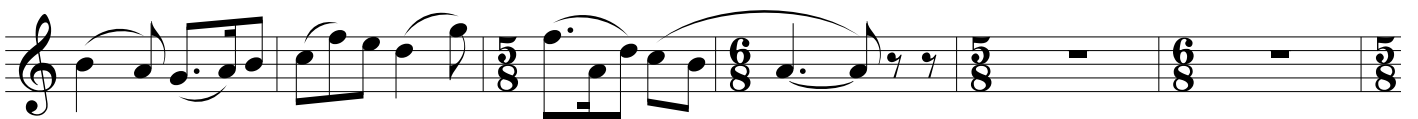


Musical staff 6, continuing the melodic line with various note values and dynamics.

78



Musical staff 7, starting at measure 78. It begins with a whole rest, followed by quarter notes and eighth notes.



Musical staff 8, continuing the melodic line with quarter and eighth notes.

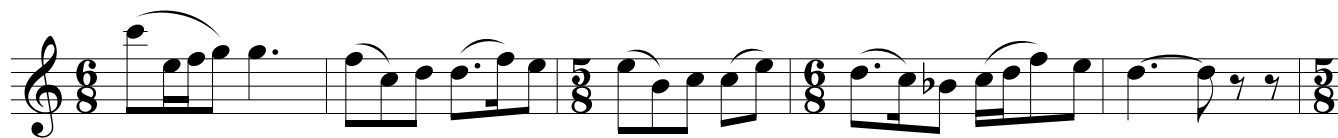
93



Musical staff 9, starting at measure 93. It begins with a whole rest, followed by a triplet of eighth notes and then quarter notes, marked with a forte (*f*) dynamic.

FOR
PREVIEW
ONLY

Solo B \flat Clarinet



101



112



FOR
PREVIEW
ONLY